

THE FORD DISTRICT

The FORD DISTRICT is where makers create and entrepreneurs set up shop.

Here the infrastructure of yesterday and the technology of today produce the ideal conditions for tomorrow's innovation. The FORD DISTRICT is a place where photographers and artisan food makers bump elbows with web designers and light manufacturers. It is quickly becoming a thriving hub of shops, restaurants, entrepreneurship, and the arts within a vibrant crossroads of a commercial district and a historic neighborhood. We expect the momentum to grow with the pending opening of the OMSI and Clinton Max Stations as well as the bike bridge over the river. In an effort to build community, the old industrial buildings are being renovated and repurposed with value and beauty by Intrinsic with the artists, entrepreneurs, and small businesses in the heart of Portland. The FORD DISTRICT is anchored by the historic Ford Building at SE 11th and Division, around the SW corner of Ladd's Addition, from Harrison to the North & Powell to the South and from 16th to the East to MLK/Grand to the West.



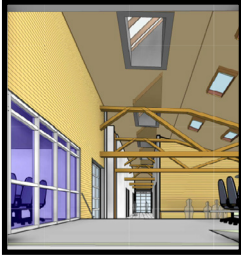
THE FORD BUILDING 2505 SE 11TH @ SE DIVISION

90 suites, 350 SF to 8,000 SF boasting tall ceilings and lots of parking. Creative office, Retail and Art Studio Uses. Retailers include: Ford Food and Drink, Dutchess Mens Wear, Pushdot Studios, Vinny's Hair Salon, Antique Books. Please call as we have various spaces available now.



JIMMY'S BUILDING & ANNEX 1100 AND 1126 SE DIVISION, BETWEEN SE 11TH AND 12TH

16 Suites, 400 SF to 7,700 SF. EXD Zone. Looking for Retail and Creative offices. Tenant's include, Blaq Designs, Pine State Biscuits and several to be announced soon. Spectacular "alley" connecting SE 11th and SE 12th runs through the building from east to creating a dry and safe access point for all tenants. Move in now!



THE DAIRY BUILDING 2705 SE 8TH @ SE DIVISION PLACE

Renovation is under way on this spectacular 65,000 SF conversion of industrial space into It Industrial and creative office space. Sizes from 1200 SF to 15,000 SF. Bow Truss roof, lots of skylights and more parking than any other project in SE Portland.



THE ALLEN BUILDING 2455 SE 11TH @ SE DIVISION

Renovation under way on this 12,800 SF single story building. 4 units between 1,800 SF and 5,000 SF Looking for creative office and It industrial uses. Numerous skylights. 16 foot clear. Parking on site + street.



7TH AND LINCOLN BUILDING 2105-2113-2121 SE 7TH @ SE LINCOLN

Renovation is complete and our building. 18,000 SF on a large parcel with lots of parking. Currently 100% leased to Salt and Straw, Isla Bikes and Still Motion Video/Marmoset. Call for availability.

INTRINSIC

FOR LEASING INFORMATION CONTACT:
Michael Tevis - 650.464.9299
Ryan Duff - 541.556.9382

